

LIFE SAFETY CODE LEGEND

- ◊ EGRESS WINDOW - CLEAR OPENING: MIN. AREA 5.7 SF, MIN. HEIGHT 24", MIN. WIDTH 20", MAX. SILL HEIGHT = 44" A.F.F.
- Ⓢ SMOKE/CARBON MONOXIDE DETECTOR - HARD WIRED
- F EXHAUST FAN REQUIRED
- Ⓜ GFI GROUND FAULT INTERRUPT REQUIRED
- Ⓜ ARC FAULT INTERRUPT REQUIRED

WALL LEGEND

- 2x6 STUD WALLS @ 16" O.C. MAX., U.N.O.
- FIRE RATED WALL, SEE _____
- BRICK VENEER w/ 22 GA. CORRUGATED METAL TIES - SPACING @ 24" MAX. HORIZ. AND 18" MAX. VERT.
- STONE VENEER w/ 22 GA. CORRUGATED METAL TIES - SPACING @ 24" MAX. HORIZ. AND 18" MAX. VERT.
- CONCRETE FOUNDATION WALL - 6" STEM WALL w/ 4" MASONRY LEDGE
- 8" (NOMINAL) CMU WALL

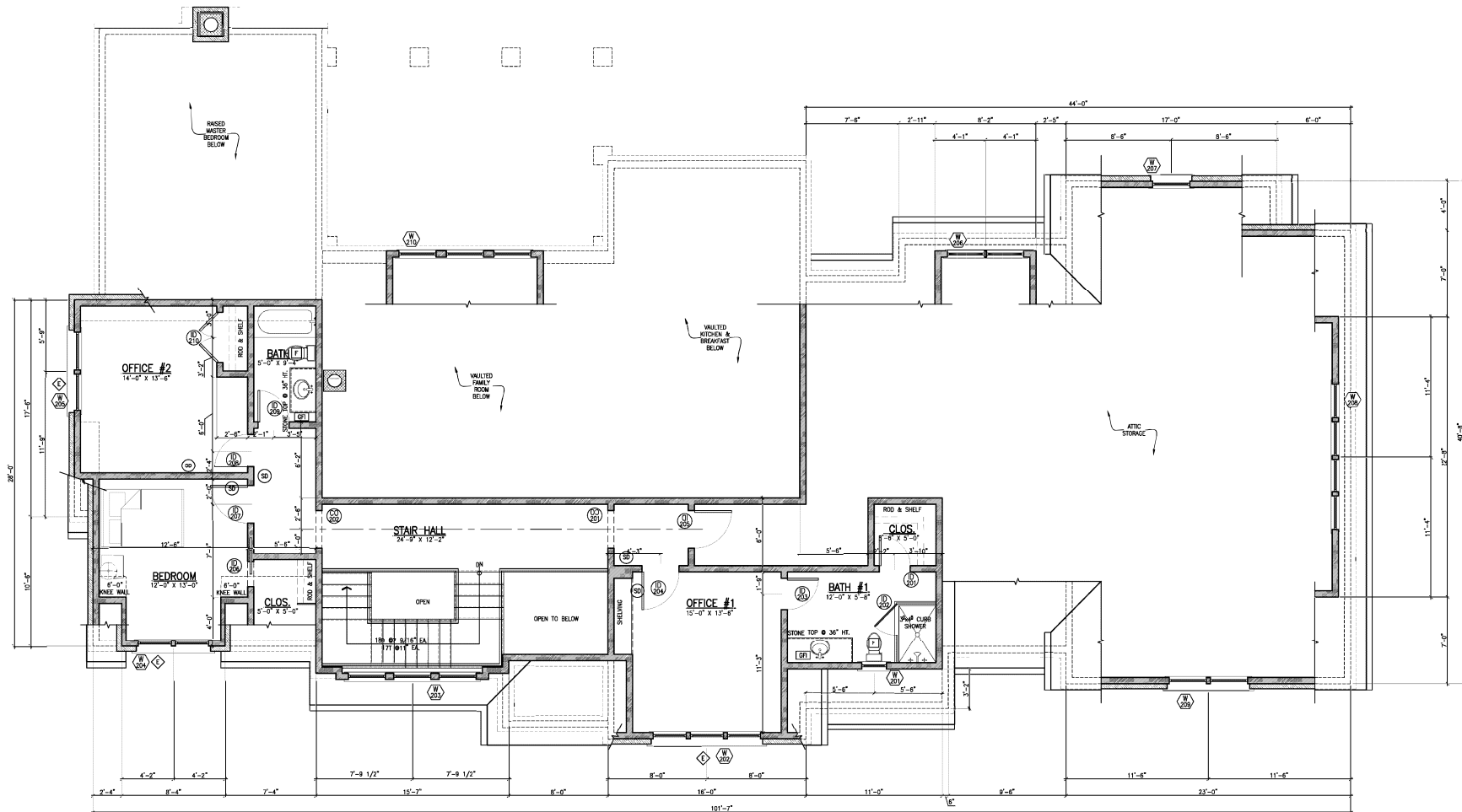
HEATED SQUARE FOOTAGE

MAIN LEVEL	3,209 S.F.
UPPER LEVEL	1,005 S.F.
TOTAL	4,214 S.F.

OTHER SQUARE FOOTAGE

3-CAR GARAGE	920 S.F.
ATTIC STORAGE	1,365 S.F.
FRONT ENTRY	37 S.F.
COVERED PORCH	362 S.F.
PATIO	144 S.F.

1 MAIN LEVEL FLOOR PLAN
A-2.400 SCALE: 1/4" = 1'-0"



LIFE SAFETY CODE LEGEND	
	EGRESS WINDOW - CLEAR OPENING: MIN. AREA 5.7 SF, MIN HEIGHT 24", MIN. WIDTH 20", MAX. SILL HEIGHT = 44" A.F.F.
	SMOKE/CARBON MONOXIDE DETECTOR - HARD WIRED
	EXHAUST FAN REQUIRED
	GROUND FAULT INTERRUPT REQUIRED
	ARC FAULT INTERRUPT REQUIRED

WALL LEGEND	
	2x6 STUD WALLS @ 16" O.C. MAX., U.N.O.
	FIRE RATED WALL. SEE _____
	BRICK VENEER w/ 22 GA. CORRUGATED METAL TIES - SPACING @ 24" MAX. HORIZ. AND 18" MAX. VERT.
	STONE VENEER w/ 22 GA. CORRUGATED METAL TIES - SPACING @ 24" MAX. HORIZ. AND 18" MAX. VERT.
	CONCRETE FOUNDATION WALL - 6" STEM WALL w/ 4" MASONRY LEDGE
	6" (NOMINAL) CMU WALL

HEATED SQUARE FOOTAGE	
MAIN LEVEL	3,209 S.F.
UPPER LEVEL	1,005 S.F.
TOTAL	4,214 S.F.

OTHER SQUARE FOOTAGE	
3-CAR GARAGE	920 S.F.
ATTIC STORAGE	1,365 S.F.
FRONT ENTRY	37 S.F.
COVERED PORCH	362 S.F.
PATIO	144 S.F.

1 UPPER LEVEL FLOOR PLAN
 SCALE: 1/8" = 1'-0"