

1 BASEMENT FLOOR PLAN
 1/4" = 1'-0"

H
 HARRIS ARCHITECTURE
 1000 N. W. 10th St.
 Ft. Lauderdale, FL 33304
 Phone: (954) 561-1100
 Fax: (954) 561-1101
 Website: www.harrisarch.com

Project: LOT #8 LYNDON CREEK
 MILTON, GEORGIA

Sheet: A-2.400

Basement Floor Plan

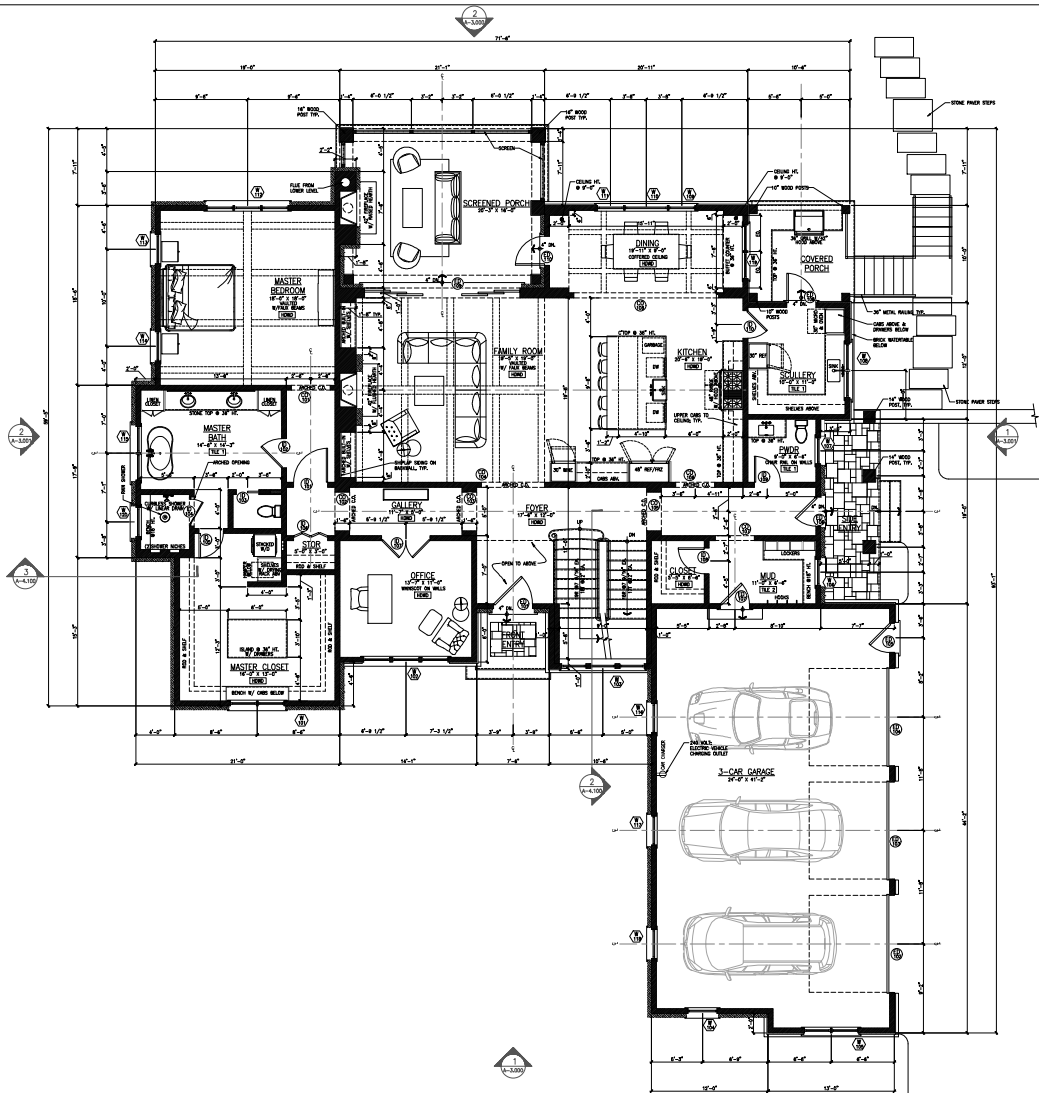
DATE: 05/21/2012

SCALE: 1/4" = 1'-0"

PRICE: 225,386.00

PROJECT: BASEMENT FLOOR PLAN

RELEASED FOR CONSTRUCTION



1 MAIN LEVEL FLOOR PLAN
A-2-410

H
HARRIS ENGINEERING

1000 W. BROADWAY, SUITE 100
MEMPHIS, TN 38102
901.525.1100
www.harriseng.com

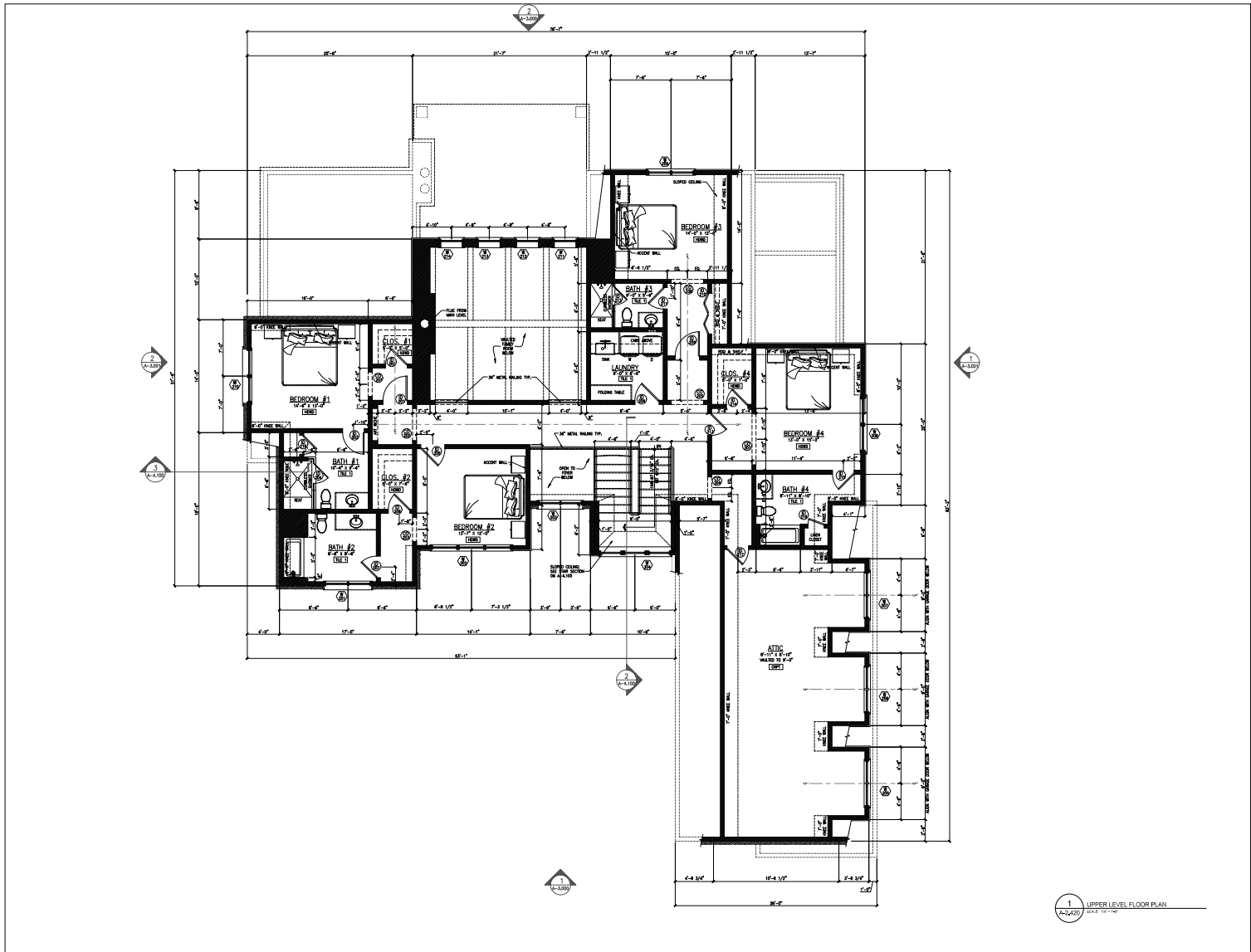
LOT #8, LYNDON CREEK
MILLON, GEORGIA

PERMIT #17 0404022

DATE: 02-04-2010
SCALE: 1/8" = 1'-0"
PROJECT: 225386.00
FILE: MAIN LEVEL FLOOR PLAN

A-2-410

RELEASED FOR CONSTRUCTION



1 UPPER LEVEL FLOOR PLAN
 1/4" = 1'-0"



H & H
 CONSTRUCTION

1000 N. HUNTER STREET
 ATLANTA, GA 30329
 (404) 525-1111
 WWW.HANDHCONSTRUCTION.COM

Project: 225386.00
 Date: 10/15/2022
 Scale: 1/4" = 1'-0"

LOT #8 LYNDON CREEK
 MCDON, GEORGIA

225386.00
 UPPER LEVEL FLOOR PLAN

NO.	DESCRIPTION	DATE
01	ISSUED FOR PERMIT	10/15/2022
02	REVISIONS	
03	REVISIONS	
04	REVISIONS	
05	REVISIONS	
06	REVISIONS	
07	REVISIONS	
08	REVISIONS	
09	REVISIONS	
10	REVISIONS	
11	REVISIONS	
12	REVISIONS	
13	REVISIONS	
14	REVISIONS	
15	REVISIONS	
16	REVISIONS	
17	REVISIONS	
18	REVISIONS	
19	REVISIONS	
20	REVISIONS	

PERMIT SET 0416222

225386.00
 UPPER LEVEL FLOOR PLAN

A-2.420