

STEPHEN FULLER



# HYDRANGEA HALL

by

STEPHEN FULLER

---

Hydrangea Hall  
1184

HOUSE PLAN

Square Feet  
4,244

---

---

**STEPHEN FULLER**

Hydrangea Hall  
1184

Square Feet  
4,244

---



The concept of looking to a catalog for a home design began hundreds of years ago in the form of *Pattern Books* which played a role in the building of thousands of the finest buildings in America.

In 1988, Stephen Fuller continued this tradition by producing *Home Plan Collections* that inspired the housing industry in a more unique medium. Fuller revolutionized the home design process by introducing these high quality portfolio's of homes in the form of printed catalog's - the first to be printed in over fifty years.

Today, Stephen is once again setting a new trend in the home building industry by using today's technology to offer digital booklets to greatly enhance your experience of searching for a home design to meet the needs of you and your family. We hope you enjoy browsing our new home plans!

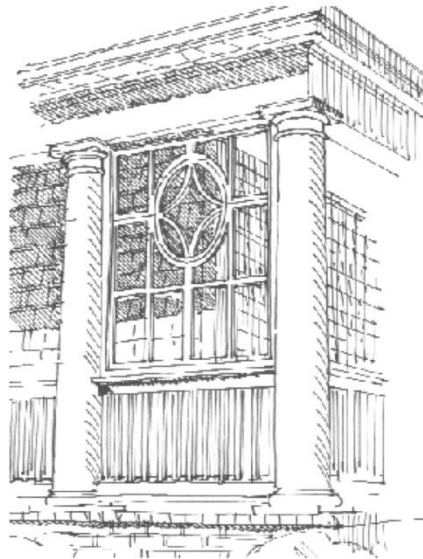
---

**STEPHEN FULLER**

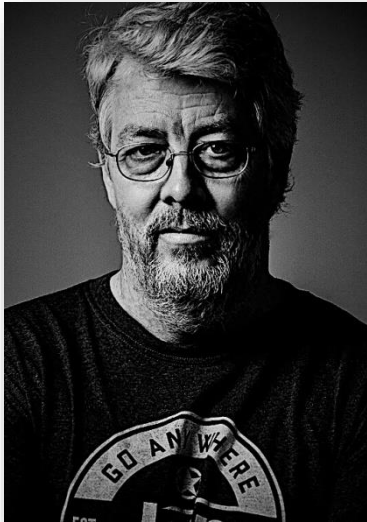
Hydrangea Hall  
1184

Square Feet  
4,244

---



“There is no part of a house that should not be thoughtfully considered. Each small detail plays a role and adds to the overall sculpture that is the home.” – Stephen Fuller



In a notable career, Stephen Fuller has received more than 40 awards of excellence for superior design, including three “Best In American Living” commendations from the National Association of Home Builders. Though Stephen believes that professional accolades are gratifying he mostly believes that just as meaningful are the countless affirmations he hears from families who draw unending pleasure and comfort from his creativity. Stephen Fuller’s instinctively fresh approach gives his designs noted personality.

With Stephen there is always a surprising newness, even in his respectful interpretations of long loved styles. Instead of expected corners, you’ll see sunlight bathing open spaces. In place of rote predictability, you’ll find sensitive responses to family needs. And in every room you will spot the signature accents that underscore true quality.

Through his designs, Stephen Fuller gives expression to an abiding philosophy, that a home should live in harmony with its surrounds, and that tradition should live in harmony with time. A Stephen Fuller home is more than a residence; it is a thoughtful balance between nature and man. It is a place where the best of the past coexists with the demands – and opportunities – of today. These are the secrets that open the door to livable, functional style that is always elegant and distinctive about Stephen Fuller designs.

---

**STEPHEN FULLER**

Hydrangea Hall  
1184

Square Feet  
4,244

---



HYDRANGEA HALL  
Front Elevation

---

STEPHEN FULLER

Hydrangea Hall  
1184

Square Feet  
4,244

---



HYDRANGEA HALL  
Front Elevation

DETAILS

Main Level: 2,567 Square Feet  
Upper Level: 1,677 Square Feet  
Total: 4,244 Square Feet

Width: 70'  
Depth: 100'

---

**STEPHEN FULLER**

Hydrangea Hall  
1184

Square Feet  
4,244

---



HYDRANGEA HALL  
Rear Elevation

---

**STEPHEN FULLER**

Hydrangea Hall  
1184

Square Feet  
4,244

---



HYDRANGEA HALL  
Left Elevation



---

**STEPHEN FULLER**

Hydrangea Hall  
1184

Square Feet  
4,244

---



HYDRANGEA HALL  
Right Elevation

STEPHEN FULLER

Hydrangea Hall  
1184

Square Feet  
4,244



HYDRANGEA HALL  
Main Level Floor Plan



HYDRANGEA HALL  
Upper Level Floor Plan

---

**STEPHEN FULLER**

Hydrangea Hall  
1184

Square Feet  
4,244

---



HYDRANGEA HALL  
Perspective 1

---

**STEPHEN FULLER**

Hydrangea Hall  
1184

Square Feet  
4,244

---



HYDRANGEA HALL  
Perspective 2

---

**STEPHEN FULLER**

Hydrangea Hall  
1184

Square Feet  
4,244

---



HYDRANGEA HALL  
Perspective 3

---

**STEPHEN FULLER**

Hydrangea Hall  
1184

Square Feet  
4,244

---



HYDRANGEA HALL  
Perspective 4

---

**STEPHEN FULLER**

Hydrangea Hall  
1184

Square Feet  
4,244

---



HYDRANGEA HALL  
Perspective 5

Porch Columns Without Base



---

**STEPHEN FULLER**

Hydrangea Hall  
1184

Square Feet  
4,244

---



HYDRANGEA HALL  
Perspective 6

---

**STEPHEN FULLER**

Hydrangea Hall  
1184

Square Feet  
4,244

---



HYDRANGEA HALL  
Perspective 7

---

**STEPHEN FULLER**

Hydrangea Hall  
1184

Square Feet  
4,244

---



HYDRANGEA HALL  
Perspective 8

Porch Columns Without Base

---

**STEPHEN FULLER**

Hydrangea Hall  
1184

Square Feet  
4,244

---



HYDRANGEA HALL  
Perspective 9

---

**STEPHEN FULLER**

Hydrangea Hall  
1184

Square Feet  
4,244

---



HYDRANGEA HALL  
Perspective 10

Porch Columns Without Base

---

**STEPHEN FULLER**

Hydrangea Hall  
1184

Square Feet  
4,244

---



HYDRANGEA HALL  
Perspective 11

---

**STEPHEN FULLER**

Hydrangea Hall  
1184

Square Feet  
4,244

---



HYDRANGEA HALL  
Perspective 12

---

**STEPHEN FULLER**

Hydrangea Hall  
1184

Square Feet  
4,244

---



HYDRANGEA HALL  
Perspective 13

Porch Columns Without Base



---

**STEPHEN FULLER**

Hydrangea Hall  
1184

Square Feet  
4,244

---



HYDRANGEA HALL  
Perspective 14

Porch Columns Without Base

---

**STEPHEN FULLER**

Hydrangea Hall  
1184

Square Feet  
4,244

---



HYDRANGEA HALL  
Perspective 15

---

**STEPHEN FULLER**

Hydrangea Hall  
1184

Square Feet  
4,244

---



HYDRANGEA HALL  
Perspective 16

Porch Columns Without Base

---

**STEPHEN FULLER**

Hydrangea Hall  
1184

Square Feet  
4,244

---



HYDRANGEA HALL  
Perspective 17

---

**STEPHEN FULLER**

Hydrangea Hall  
1184

Square Feet  
4,244

---

## DETAILS

Main Level: 2,567 Square Feet  
Upper Level: 1,677 Square Feet  
Total: 4,244 Square Feet

Width: 70'  
Depth: 100'

---

**STEPHEN FULLER**

Hydrangea Hall  
1184

Square Feet  
4,244

---

HOUSE PLAN  
FEES

Reproducible/PDF Plan Set:     \$ 4,500.00  
True Reverse: (Additional)       \$ 300.00

The Reproducible/PDF Plan Set is an electronic PDF File. If you purchase this format the plan will be emailed to you and at your convenience you can print the file at your local FedEx or quick print location.



All the floor plans and renderings in this publication are the intellectual property of Stephen Fuller, Inc. and may not be reproduced by any means, electronic, mechanical, photomechanical, recorded or otherwise without written permission of Stephen Fuller, Inc. All rights reserved. All text, designs, and illustrative materials are the intellectual property of Stephen Fuller, Inc. and may not be reproduced by any means, electronic, mechanical, photomechanical, recorded or otherwise without written permission of Stephen Fuller, Inc.

---

**STEPHEN FULLER**

Hydrangea Hall  
1184

Square Feet  
4,244

---

HOW TO ORDER  
STEPHEN FULLER  
PLANS

**BY PHONE:** You may order any of our home plans by phone by calling, 678-775-4663.

**BY EMAIL:** Simply email, martha@stephenfuller.com if you have questions about the plans and how to order. We allow orders for additional sets of your original order up to 60 days after the purchase date. After that date, any order will be considered a new order.

**ORDER CHECKLIST FOR YOUR PRINTER:** In determining the total number of sets you will need; we suggest you take the following into consideration. To study the layout and design more closely, one set is generally sufficient. To build the home, you may want to print the eight-set plan package. You may need to check with your lender, subdivision association, plan commission, and builder to determine the number of plans they will require.

**REVERSE SETS:** All of the construction sets are drawn to reflect the layout as shown in the photos on our website. Should you need or desire to build the home in reverse orientation, you may order sets of plans reversed. The letters and dimensions will appear backwards.

**ORDER POLICY:** It is our intent to give you prompt, courteous service. Upon receipt of your order, which will be processed within three business days. All plan purchases are final. No refunds or exchanges.

**PAYMENT METHODS:** We accept VISA, MASTERCARD AND AMEX. Check or money orders are also accepted.

**PLAN PRICING:** Plan prices are subject to change without notification.

**SHIPPING COSTS:** Shipping costs may increase without notice. We ship our plans via UPS. As a result, a street address is required to properly process your order. International shipping rates are higher.

---

STEPHEN FULLER

Hydrangea Hall  
1184

Square Feet  
4,244

---

ABOUT  
STEPHEN FULLER  
PLANS

**Each Set of Plans Includes:**

- Working drawings of 1/4" front and 1/4" sides and rear elevations
- Complete dimensioned and detailed floor plans
- 1/4" roof plan
- 1/4" typical building section with 3/4" typical wall section
- Major exterior details such as dormers, cornice and chimney
- A finish schedule and an electrical plan

**About Our Basements:**

Most homes designed by Stephen Fuller Inc. are created for lots sloping from front to back with walkout daylight basements (or sometimes called Terrace level). The daylight area, windows and doors are typically located at the rear of the home, unless noted. The basements are designed to use load bearing walls as structural pieces. They are not designed for post and beam construction. The foundation walls are designed as 10" poured wall construction at a height of 9'-10'. Our basements are designed as finished spaces. However, the basement square footage is not typically included in the overall heated square footage of the house. Floor plans and elevations are subject to minor changes. Floor plan dimensions on layout are approximate. Consult working drawings for actual dimensions and information. Elevations are artists conception. All of our total square footage figures represent heated floor only. They do not represent two-story vaulted spaces, garages, unfinished areas or basements. No plumbing or mechanical plans are included. These should be obtained from a local engineer to ensure mechanical equipment is sized correctly for your regional building codes and climate conditions. All of our plans are designed to meet the requirements of the Standard Building Code (SBC), but because codes are subject to change, we cannot warrant compliance with any specific codes or ordinances. The purchaser should ensure that the plans comply with all applicable building codes and are suitable for a particular site, including any subdivisions restrictions, before actual construction begins. Because we have no control over the selection of your builder, or other professionals, we cannot be responsible for the advice or assistance you receive from them or for the methods they use. After you receive your plans, we recommend that you have an architect or engineer in your area review the plans before actual construction begins. We retain the copyright to all of our plans and do not release our copyright for modifications. If modifications are needed, those changes can be made by Stephen Fuller Inc. For more information on modifying the plans, please contact us at, 678-775-4663.



---

**STEPHEN FULLER**

Hydrangea Hall  
1184

Square Feet  
4,244

---

## HOW TO CONTACT US

Office Address:

3320 Holcomb Bridge Road | Suite B  
Peachtree Corners, GA 30092

Mailing Address:

P.O.BOX 1917  
Norcross, GA 30091-1917

Phone:

678-775-4663

Website:

[www.stephenfuller.com](http://www.stephenfuller.com)

Email:

[houseplans@stephenfuller.com](mailto:houseplans@stephenfuller.com)